

Alaska Department of Fish and Game

Habitat Section
Southeast Region



114-27-10300 Tributary 4

ADDITION

Water body name:

Survey date: 6/17/2022

Quad: Juneau A-4

Species & Lifestage:

Upper Reach Latitude: 58.060434 **Longitude:** -135.296625

Survey crew: FC, RR

Lower Reach Latitude: 58.060591 **Longitude:** -135.290729

Findings: We surveyed this uncataloged stream using a backpack electrofisher and GPS. We captured juvenile coho salmon, Dolly Varden, and cutthroat trout. The tributary stream flows through a gravel channel interspersed with quality coho salmon rearing habitat (Table 1; Figures 1, 2).

Recommendations: Add this uncataloged stream to the anadromous waters catalog for rearing coho salmon (Figure 3).

Nomination: Pending

Table 1.—114-27-10300 tributary 4 survey data.

Waypoint	Latitude	Longitude	Notes	Stream Width ft	Stream Substrate	Habitat Features	Gradient %	Sample Effort	Sample Results
796	58.060421	-135.296531	Start of survey on small tributary flowing through old logging road where a culvert was removed. Also near end of survey (just upstream); did a loop on this system and sampled unmarked tributaries for fish.	2-4	Small Gravel	Cut Banks Spawning Substrate	4-6	EF	1 CT
797	58.060148	-135.296009	Thick brush and second growth around stream.					EF	2 CO 2 DV
798	58.058571	-135.294061	Where river-right tributary flows into main channel with low water and a relatively high gradient; marginal for fish habitat.	2-4	Small Gravel Large Gravel		4-6	EF	
799	58.058520	-135.294271	End of survey on this tributary, stream goes subsurface with low water; marginal fish habitat. Could we better with a higher flow season.					EF	No Fish
800	58.058476	-135.294673	3' tall falls into a 1' pool; stream still sporadically going subsurface.					EF	2 DV
801	58.059228	-135.295602	Small river-right tributary. Good rearing habitat; only resident fish capture.	4-6	Fine Organic Small Gravel		2-4	EF	4 DV
802	58.060460	-135.296633	Upper extent of survey.					EF	2 CO



Figure 1.—Juvenile coho salmon captured at waypoint 797.



Figure 2.—Channel at waypoint 796.

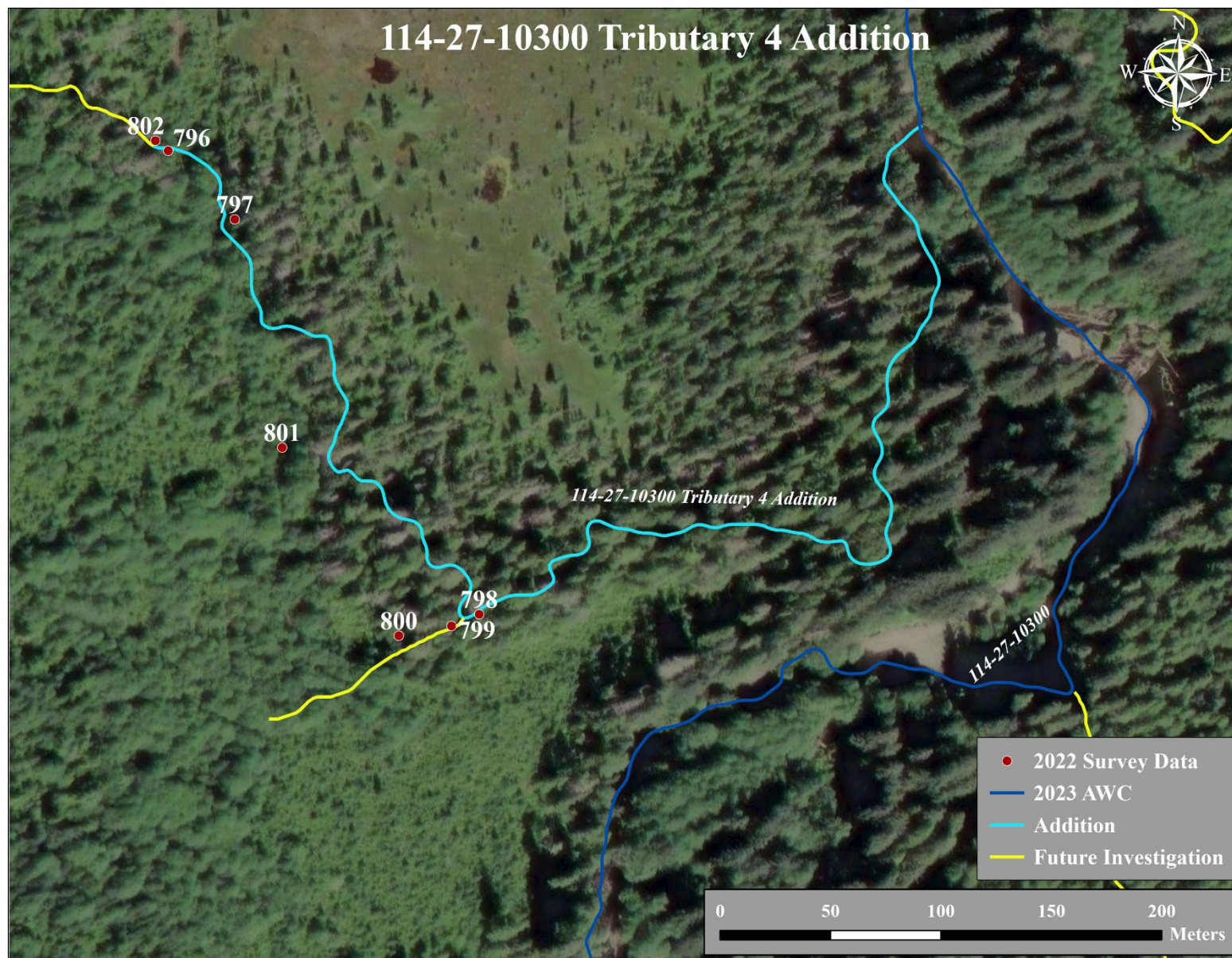


Figure 3.–114-27-10300 tributary 4 addition map.